

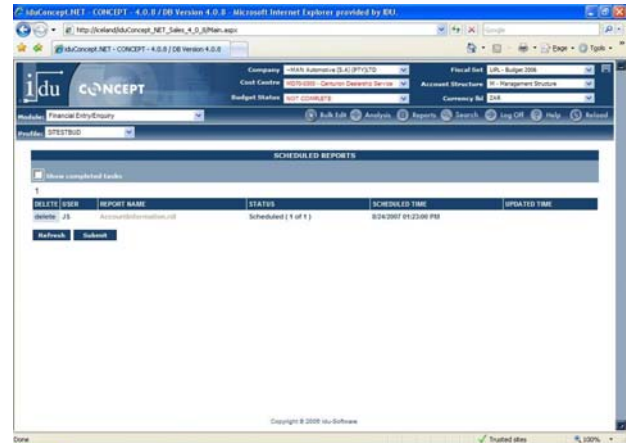
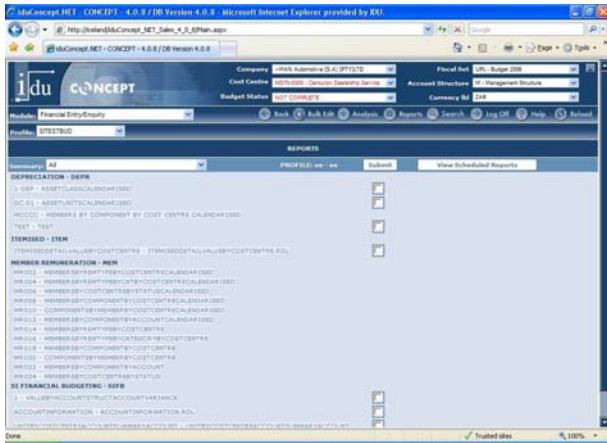
Reporting Scheduling Module



Historically report scheduling has been the realm of the IT department as a means to restrict end users from executing complex reports on production systems and often causing system downtime as a result users are left to only run reports online, causing delays and system slow down as the reports execute on the server or local machines. The idu-Concept Report Scheduling engine allows licensed users to schedule reports to run out of core times and to select delivery format as well.

In response to clients requests idu has developed an additional add-on module to idu Concept, the idu-Concept Report Scheduling module. This module allows users to elect to schedule and prioritise the running of reports against the idu database in line with their security settings within the idu Concept administrator.

On completion a user friendly end user screen is available to select output for printing or viewing. This screen will allow the user to interact with all reports that he or she has scheduled as well as review the status of reports that have been or are still to be run. The user then also has the option to delete reports either from the schedule queue or from history.



The "right now" scheduling capability allows users to select and execute reports at the push of a button. Alternatively reports that users know are more complex and can affect system performance can be scheduled for a time and date in the future for example month end reports. A "task status" allows users to view report schedule and the execution status of reports.

Users can select reports to be scheduled and output in XLS, PDF and RPT formats removing the requirement to format reports at a later stage for emailing, archiving etc.

User profiles allow the administrator to customise screens, reports, analysis and include custom developed reports per user profile.

Batch Scheduling for Administrators

On the Administrator side the facility has been expanded to enable the automatic batching and scheduling of batch reporting processes by the Administrator. Once a batch has been created it can be saved and reused into the future.

The functionality available to the user in terms of output format can likewise be set by the administrator as well as having the added option of automatically mailing the report batch, on completion to the required users.

Scheduling can be real-time or delayed and set for months into the future if required, enabling complete automation in the month end reporting process.

